

## Characteristics

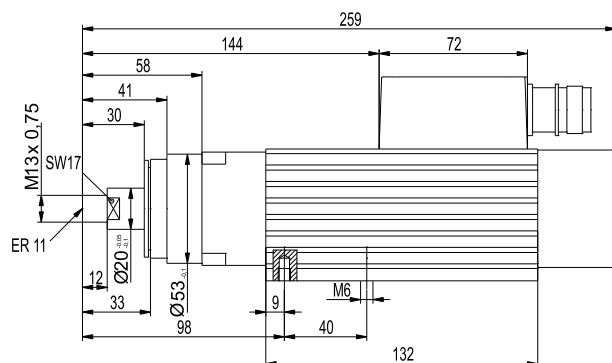
- Sturdy 2-pole three-phase motor
- Rectangle built, Protection type IP 54, insulation class F
- Cast sign A side, aluminium cast B side
- Motor- shaft for collets type ER 11
- Nominal output 0.5 kW (S6-40% operation)
- Revolutions range 5,000 U/min. - 30,000 U/min.
- Manual tool exchange
- Connector M23
- incl. collet ER 11, Ø 6 mm
- Clamping range Ø 1 mm – Ø 7 mm
- Self-ventilating B side
- Revolution control via frequency converter
- Spindle bearing: **2 bearings A side (milling side)**  
**1 bearing B side (vent side)**
- Options:
  - CoolMin® (internal or external)
  - Frequency converter
  - Different clamping tools, mounting plates, line lengths
  - Exhaust device



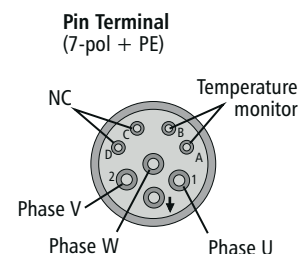
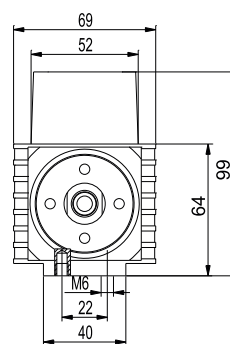
## Technical Data

Description	Torque at 18.000 U/min.	Revolution range	Cut-off frequency	Number of poles	Nominal voltage	Nominal current	cos φ	S6 = 40% operation	Rotation [mm]	Weight [kg]
iSA 500 Spindle motor	0.28 Nm	5,000 to 30,000	300 Hz	2	3 x 230 V	2.6 A	0.75	0.5 kW	0.01	2.8

## Scale Drawing



## Motor connection



## Order data

Spindle motor iSA 500  
Item-No. **477004 3130**

Collet-Set, type ER 11  
Ø 3 -6,35 mm  
Item-No. **239170 0000**

iSA 500 with converter and connecting cable (8m)  
Item-No. **310704 1611**

connecting cable (8m)  
Item-No. **392306 0800**

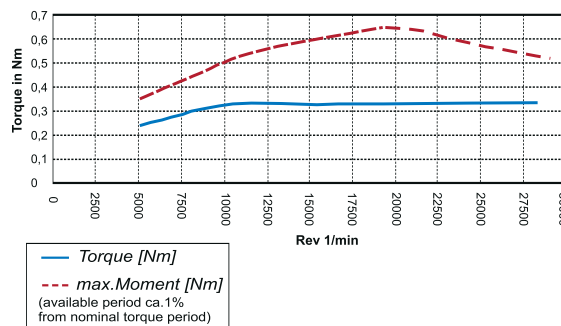
iSA 500 with CoolMin  
Item-No. **477004 5130**

Frequency converter  
Item-No. **311707 6000**

iSA 500 with converter, connecting cable (8m) and CoolMin  
Item-No. **310704 1631**

Exhaust device for tube (38 mm)  
Item-No. **239012 0000**

## Torque-Curves



Technical specifications subject to change.